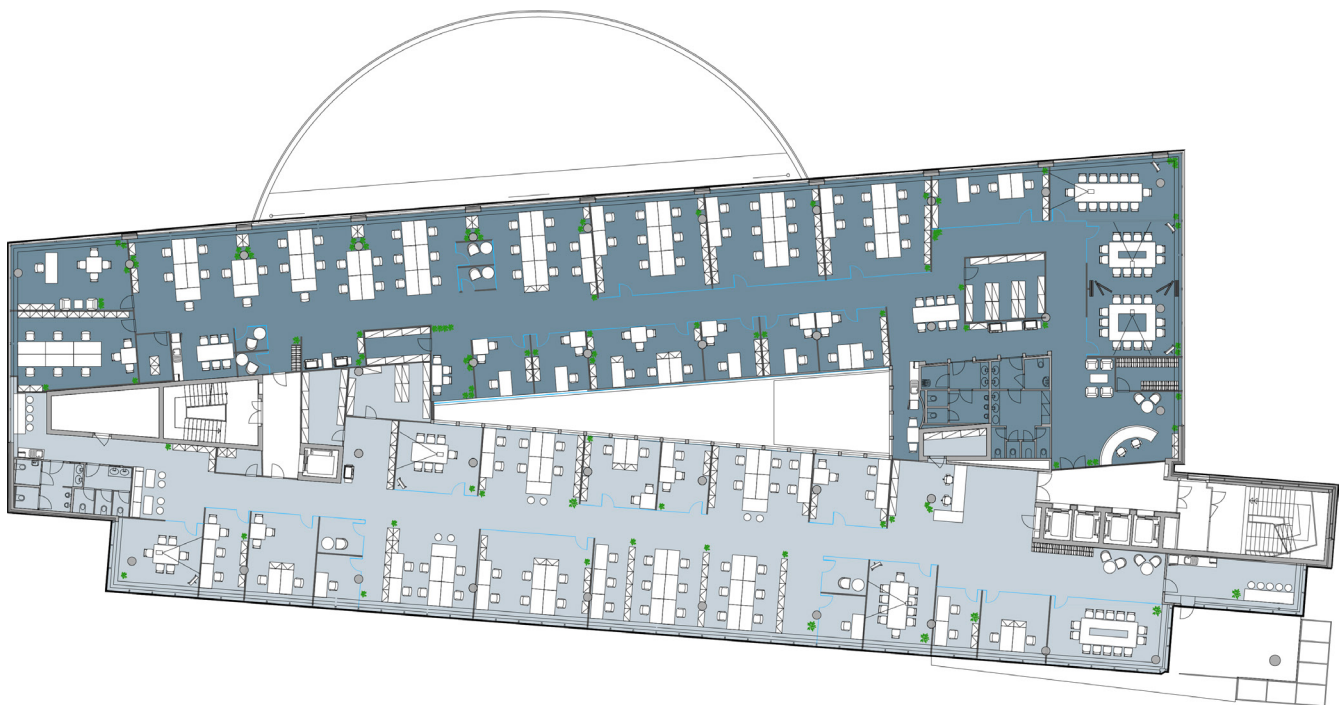


# LIFE BUILDING C

## Offices per standard floor

Each floor can be divided according to your needs: 1 unit (single tenant) | 2 units

FLOORPLAN OPTION 02	OFFICES PER FLOOR 878 – 973m <sup>2</sup>	● 76 WORKPLACES   973m <sup>2</sup>
		● 54 WORKPLACES   878m <sup>2</sup>



LIFE\_building C, Vyskočilova 1410/1 Prague 4, 140 00